

Betton Grange

6880

Building the 81st Grange



Winter Newsletter 2017



No. 6880 *Betton Grange* on display in the main hall at Warley Model Railway Exhibition on Saturday November 26th. TIM EASTER

LOOK AT ME!

For those of you who didn't spot No. 6880 *Betton Grange* in the railway press in her most complete form yet, feast your eyes on the above picture!

Yes, for the first time since the mid-1960s, the public were treated to the sight of a 'complete' 4-6-0 'Grange' class locomotive, when we took No. 6880 to the annual Warley Model Railway Exhibition at the National Exhibition Centre, Birmingham over the weekend of November 26th & 27th.

Of course, the locomotive is far from complete. For a start, it was carrying the boiler from Collett 'Hall' 4-6-0 No. 5952 *Cogan Hall*, and it doesn't have a tender. The motion and myriad other jobs are still to be completed, but nevertheless, the unmistakable outline of a long-lost class of steam locomotive was there for all to see and marvel at.

The appearance of our locomotive at

this prestigious show was undoubtedly a landmark event in the evolution of our project, but the amount of work that went into getting the locomotive ready for its first public appearance away from its home base at Llangollen should not be underestimated. You can read more about this on pages 6 & 7 of this Newsletter.

Meanwhile, the Boiler Appeal having passed the half way mark of its £225,000 target, triggered the much-anticipated commencement of the restoration of the former 'Barry Ten' Swindon No. 1 boiler from No. 7927 *Willington Hall*. During 2016, the engineering team of volunteers, stripped and prepared the boiler for inspection (including NDT testing) so that interested parties could tender for the work.

The winning bid came from Tyseley Locomotive Works, so it was arranged with our friendly haulage contractor – Moveright International – to take the

boiler from Llangollen to Tyseley using the same low loader that returned No. 6880 home after the Warley show. Work is due to get underway imminently, with a view to returning it to us in full working order by April 2018.

It can be said that the project is in many ways on the 'home straight' with the exciting news that work on the boiler is now underway, but this still has to be paid for, and as Lynn Moore explains in this issue, we are still a long way from having sufficient funds to pay the full cost of the boiler overhaul. Then there is the rest of the bottom end to finish, not to mention the construction of a new tender! We need your help now more than ever before, especially if we are going to steam *Betton Grange* in 2018.

Paul Appleton

Editor

CHAIRMAN'S REPORT

We have a very hard working team of volunteers and their efforts during the autumn were magnificent. We were under pressure to get the locomotive looking good for 'Grange 80' and then the Warley Model Railway Exhibition and in respect of both, we can be proud of our achievements. The photographs of her with *Cogan Hall's* boiler, chimney, bonnet and whistles mounted, at the NEC, really made a wonderful statement of how far we have come. I don't think there was anyone who wasn't impressed at seeing just how a recreated 'Grange' will look.

With the boiler overhaul now underway at Tyseley Locomotive Works, the team are looking forward to 2017 being a

productive year. We have created some great momentum and it would be a shame to lose it. At our locomotive's home-base there are ever increasing demands on the workshop space for contract work. We have always enjoyed a fairly relaxed approach until now, with a sharing of equipment and the full support of the ex-CME Dave Owen.

With only two years to go to complete the loco, we hope that our programme of work can be accommodated without too many problems. A meeting is scheduled early in the New Year to discuss our plans and how they fit in with Llangollen Engineering's commitments.

I would like to welcome more recently recruited volunteers; Dave Brown and his friend Matt from Oswestry, and also

Nigel Williams, who has recently moved to Llangollen. We hope you will enjoy working with the team that in the main seem to come from far flung places!

It is a shame that the influx of new members is tempered by the loss of others. We were sad to hear of the passing of Mr. James Jackson of Stockport, who had been a very generous and loyal supporter. It is very sad when we lose members who will not now see the loco finished, as we would not be where we are without their support. We are all striving to complete the build in as short a time as possible, but as always depends on our ability to raise funds.

Quentin McGuinness



An early view of a 'Grange' in action, as No. 6843 *Poulton Grange* takes a long mixed goods past Denham on the Great Western/Great Central joint line in 1938. C.R.L. COLES/RAIL ARCHIVE STEPHENSON



In contrast to the picture opposite, this view of No. 6869 *Resolven Grange* was taken in 1951, and shows the loco entering Bristol Temple Meads with an Up stopping train, wearing plain BR black livery with red backed number and name plates, together with a Penzance shed plate. J.D.MILLS/RAIL ARCHIVE STEPHENSON

WARLEY SHOW FUNDRAISING BOOST

Firstly, I would like to wish everyone a very happy and prosperous 2017. The highlight of 2016 as far as the sales are concerned has to be Warley. The event was fantastic and we raised approximately £1,500 on the sales stand alone. A huge thankyou to everyone who gave their time to help at the event and all those people who bought something from the stand or took a chance on the raffle. All raffle prizes have been claimed and delivered to the lucky winners.

2017 is going to be an exciting year for us and there are lots of sales events coming up. I would be very grateful for as much help as possible on the sales stands. If you can spare an hour or two so that we have cover for breaks that would be an enormous help. If you can spare a full day that would be even better, and I can promise it will be lots of fun!

Second hand railway books are also always very useful; if you have any to donate please drop me a line or give me a call and we can arrange for them to be collected or better still, bring them to an event and give us a hand on the stand.

The other areas that help us to raise money are 'TEXT Donate' and 'Easy Fundraising'. Both methods are a great way to help us to reach our target of Steaming 6880 *Betton Grange* in 2018.

Text: MAKE18 £5 to 70070 – it's easy and helps us to finish the job!

Easy Fund raising is a way to donate without it costing you a penny, all you need to do is log on to www.easyfundraising.org.uk and register '6880 Betton Grange' as your chosen charity and then do your online shopping or ebay shopping through the easy fundraising site. By doing this the retailers will donate a percentage of your

purchase to 6880 *Betton Grange* at NO COST to you, so far our supporters have raised a whopping £205.60 through Easy Fund raising, that's a fantastic amount and it hasn't cost them a penny, please give it a try and help us finish the job.

I look forward to seeing you at one of our events this coming year.

Liz McGuinness

Fund raising Director
Lizzieanne1961@gmail.com
Mobile - 07487 778946

Events for the First half of 2017

March 3-5: Llangollen Railway Spring Gala

March 17-19: Severn Valley Railway Spring Gala

April 27-30: West Somerset Railway Spring Gala

April 28-30: Bristol Model Railway Exhibition

May 27-29: Gloucestershire Warwickshire Railway Gala

June 16-18: Great Central Railway Model Railway Event

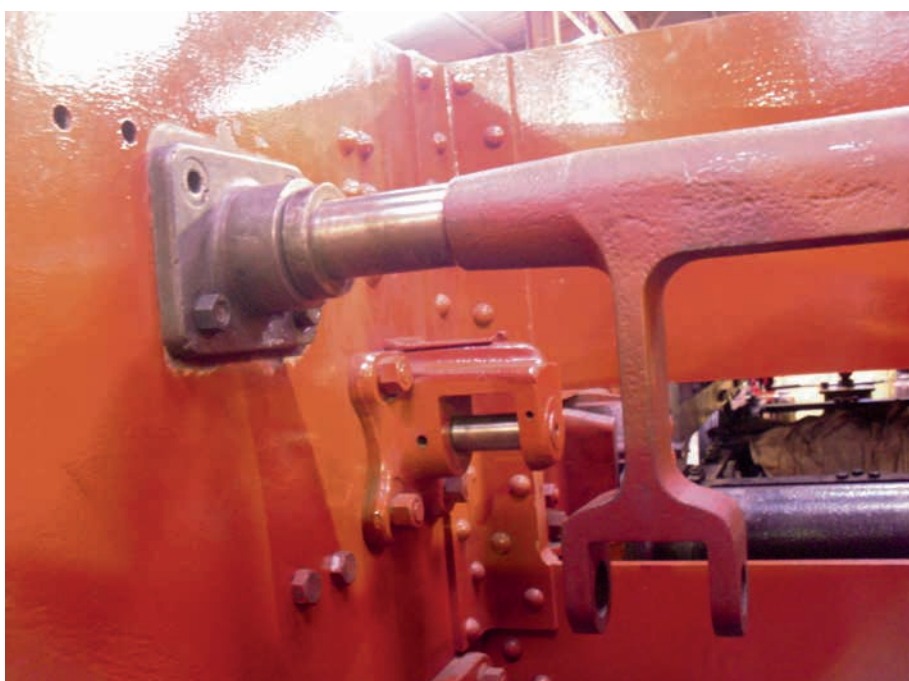
June 24-25: Tyseley Locomotive Works Open Weekend



The moment No. 6880 started to look like a true 'Grange' – the Swindon No. 1 boiler from No. 5952 is lowered into the frames in early November. QUENTIN MCGUINNESS

BOILER DROPS IN

The boiler from No. 5952 *Cogan Hall* has been dropped into the frames of No. 6880 to create the first complete 'Grange' outline since 1965.



The weighshaft fitted between No. 6880's frames. MICK PRIOR

As we start 2017, I want to give my personal thanks for the outstanding efforts of our active volunteer members who gave so much to preparing 'Betton' for the Warley show. I was delighted with the outcome and how the locomotive looked and was displayed at Warley. What a great team we really do have. It gave me, and the team, a great sense of pride in what we had achieved.

So now on to 2017; the working weekends commence again in February and as we get closer to completion within the next two years, there is still a tremendous amount of work to be done.

I have recently invited quotes from Llangollen Engineering and others for further work, including refurbishment of the connecting rods and final fitting of the motion plates, along with riveting of the running board, which has to be done if we are to achieve mainline status.



Following re-assembly of No. 6880 in the summer, the team were able to forge ahead once more. Here, in early October, the weighshaft is seen alongside the re-wheeled loco, which also has its motion brackets fitted. MICK PRIOR

The plans for 2017 include: final pressure testing of the cylinders, completion of the motion, final location of the boiler position, continuation of installing the braking and sanding gear, fitting of the reverser and associated parts, manufacture of the boiler cladding, and making up and fitting of as many of the pipe runs as possible.

Much of the work required to complete the locomotive depends on the resources available, whether that is volunteer labour, availability of parts and time, and money for paid engineering work. There are still a number of parts to sponsor and pipework for the locomotive required. As a member and supporter of 6880 *Betton Grange*, any financial support you can give is greatly valued.

Our hugely successful 'On the Shelf List' has attracted a fantastic response from members and supporters alike. As the build enters another exciting stage there are still plenty of parts that can carry your name.

There are many small and larger parts, fittings, etc., that are still needed. Copper piping for the boiler fittings, cab fittings, etc;

Brake Block	£85
Plumb Fund – (99 @ £25 each)	£25
Boiler Cladding Sheets (12 @ £60 each)	£60
Cylinder Main Cleating sheet LHS	£100
Cylinder Main Cleating sheet RHS	£100
Cylinder Front End Cover External Cleating RHS	£120
Boiler Bands (3 required @ £100 each)	£100



The new boiler water gauge frame seen in the workshops at Llangollen in October. This was one of the components taken to Warley for display. MICK PRIOR

Slide Bar – Top Right	£740
Slide Bar – Top Left	£740
Side Bar- Bottom Right	£740
Slide Bar – Bottom Left	£740
Locomotive Rear Coupling	£940

So, if you can help in any way, it would be much appreciated. Just send your completed cheque (payable to 6880 *Betton Grange Society*) with the part you would like to sponsor clearly indicated to: Parts Appeal, 6880 *Betton Grange Society*, 224 Staining Road, Blackpool FY3 0DL, using the form included with this newsletter.

If we are to get her steaming in 2018 (yes only next year), then we need your support more than ever.

And my, what exciting times lie ahead! It will be fantastic to see a 'Grange' on her first passenger trains up and down the Dee Valley at the Llangollen Railway, and hopefully that will be achieved during 2019.

Let's get her finished!

Chris Moore

Engineering Director

ON THE ROAD WITH No. 6880

By Paul Appleton

It all started as a casual enquiry – would the organisers of the Warley Model Railway Exhibition be interested in having No. 6880 *Betton Grange* as an exhibit at their 2016 show?

Each year the show has a full size standard gauge locomotive on show as a centerpiece, along with a narrow gauge example or two, but the initial response was that locomotives for the next two years were already booked, but we could join the queue.

Unfortunately, three years' time would be no good to us, the loco would ideally be finished by then. It was this year really that we needed to raise the funds, but thank you!

However, with the proviso that we could organize our own transport, it was decided that we could attend the show, and instead of the original planned standard gauge exhibit, which now had a degree of doubt about it, the organisers decided that two locomotives from

the Vale of Rheidol Railway would be accommodated instead – so we were in if we could get the loco there.

Andrew Goodman of Moveright International kindly agreed to take No. 6880 to the show and bring it back again afterwards, despite the fact that it would have to be the first item into the hall on Friday morning – at an eye-watering 5.30am!

The next, and most important question, was whether Chris Moore and the team could get the loco into presentable condition in time for the show. Bearing in mind that the loco had to be partially dismantled in the spring for corrective work to be carried out on the alignment of the frames. A Herculean effort was required to not only put the loco back to where it was, but to get it to an advanced stage, including removing the boiler from *Cogan Hall* and cosmetically restoring it so it could grace the chassis of No. 6880.

Because of the time constraints, it was agreed to focus on one side of the loco

and so the right-hand (driver's) side was given priority and appeared at the show in a more complete state. In any case, one side would have the sales stand and display boards, so would be partly hidden anyway. The number of working parties was ratcheted up, and Chris and his team put in many extra hours to ensure it would be a case of 'Alright on the Night'.

Meanwhile, copious quantities of paperwork had to be read and signed – the NEC is classed as a construction site during build up on the Friday and there is a considerable rule book to adhere to – equipment had to be booked and the floor plan designed. Members were recruited to help and those who were helping with build-up and staying the weekend needed accommodation organizing. In all, the logistics were considerable and sometimes less than straightforward as clearly our own requirements and those of a show used to dealing with over a hundred model railway layout exhibits and a similar number of trade stands, were at times at odds with each other.

Each of the Directors took on a specific



At the end of a busy Saturday at the Warley show, members of the team (not all were available) pose alongside No. 6880 *Betton Grange*, in this elevated view taken using an ingenious homemade telescopic pole by photographer TIM EASTER

part of the display, with yours truly co-ordinating it all; Liz organized the stock and display material for the sales stand, while Lynn sorted the display boards and fund-raising material. David Huntbatch bought a large screen TV (which he donated to the Society – thank you David) and a DVD player and prepared a continuous loop DVD about the 'Granges' and the construction of No. 6880, while Quentin collected and delivered material and equipment, including the sponsor's boards and most importantly, the chimney from No. 6868 *Penrhos Grange*, which he had professionally polished as the crowning glory on top of the boiler. Richard Cadge meanwhile made sure everything was run to budget and paid the bills as and when required.

The result was a well-co-ordinated display which really did the Society proud. The loco looked an absolute treat and was a credit to the team who put in so many hours back at Llangollen, and the sales stand looked professional and the display boards were full of pictures and information, while Chris brought along a selection of 'Grange' parts that were displayed on tables. We also had a 2½in scale 'Grange' in the shape of No. 6800 *Arlington Grange*, courtesy of Mr and Mrs Heyden.

Needless to say, 'Betton' attracted a lot of attention and we recruited new members and Lynn got new 'Adopt a Grange' supporters, which along with the stand revenue, raffle and the money collected in the many collecting buckets rattled by those who came to help on the stand, raised a considerable sum of money. The exact amount will depend on whether several 'promised' donations and memberships come to fruition.

We also featured on Pete Waterman's BBC West Midlands Radio programme which was broadcast live from the show. In keeping with the model railway theme, we had a specially commissioned 'O' gauge wagon on sale (see Lynn's report on page 8 for more details) and a Dapol 'N' gauge 'Grange' that we were asking for expressions of interest in having such a model decorated as No. 6880 *Betton Grange*.

6880 Society members were also invited to come to the show free as part of our annual autumn Members' Day and more than 50 of you took up the opportunity. It was great to meet so many of our members on the stand. All in all, it was a great flag waving opportunity and a real morale booster for our group – well done everybody!



Part of the large sales and display area that was built alongside *Betton Grange* at the NEC for the Warley Model Railway Exhibition, where No. 6880 was a central feature for around 15,000 visitors over the two days. Seen after the public had gone home on the Saturday. TIM EASTER



The imposing front end of No. 6880 seen on Saturday November 26th at Warley show, complete with 80th Anniversary headboard. TIM EASTER

FUNDRAISING REPORT

I am delighted to report that the Boiler Appeal Fund stands at an amazing £164,600, this means that another £32,000 has been added since the last Newsletter in August 2016. While this is a huge amount, we are still some £60,000 off our target for completion of the boiler restoration. The generosity of our members and supporters has been second to none, to whom 'Betton' says a big 'Thank you'. It is delightful to know that the next generations will be able to ride behind her whilst acknowledging those pioneers that had the foresight to 'Recreate a Grange for the 21st Century' and honouring the 'Granges' that are no more.

The Boiler Club and the 'Adopt a Grange' scheme have been hugely successful with already, 43 of the 80 'Granges' adopted, which means the other 37 are still awaiting adoption. For just £1,000, which can be paid in instalments over the next two years, any of the 37 names below can be associated with your name.

Or, join the Boiler Club for just £225! – If we had just 50 more 225 Boiler Club members and 37 'Granges' adopted we would reach our target (especially with Gift Aid added); $50 \times £225 = £11,250 + £37,000 = 48,250 + £12,063$ (gift aid) = £60,312. So, if you have not already contributed or just want to send us a bit more to see the 'Grange' in steam next year, then you know what to do – every donation is counted, appreciated and acknowledged.

225 Boiler Club – Donate £225

Benefits include – certificate, Jonathan Clay print, addition to 'Roll of Honour'

Adopt a Grange and Premier 225 Boiler Club – Donate £1,000

Benefits – as above, plus name on plaque on locomotive, invitation to Special Day with 6880, priority booking for first main line train, framed print of your Adopted Grange.....

'Granges' available to adopt;

- 6802 Bampton Grange
- 6803 Bucklebury Grange
- 6804 Brockington Grange
- 6809 Burghclere Grange
- 6810 Blakemere Grange
- 6811 Cranbourne Grange
- 6812 Chesford Grange
- 6817 Gwenddr Grange
- 6819 Highnam Grange
- 6820 Kingstone Grange
- 6821 Leaton Grange
- 6823 Oakley Grange
- 6824 Ashley Grange
- 6825 Llanvair Grange
- 6826 Nannerth Grange



The 6880 Betton Grange Society's new Ambassador, TV personality Mark Evans inspects the loco inside the shed at Llangollen during October. DAVID HUNTBATCH

MARK EVANS

We are all delighted that TV Presenter Mark Evans has agreed to be our first Ambassador. He met Directors and volunteers from the Society during October and enjoyed his visit to Llangollen immensely. Mark's involvement will help to increase the profile of the build to the general public and help to bring in much needed funds. Mark is well known as the vet turned TV presenter with a passion for machinery and the restoration of old vehicles. We will be looking at ways to make the most from his involvement in the year ahead – watch this space.

Here's to a Successful Future!

- 6828 Trellech Grange
- 6830 Buckenhill Grange
- 6832 Brockton Grange
- 6834 Dummer Grange
- 6835 Eastham Grange
- 6837 Forthampton Grange
- 6838 Goodmoor Grange
- 6840 Hazeley Grange
- 6842 Nunhold Grange
- 6844 Penhydd Grange
- 6845 Paviland Grange
- 6846 Ruckley Grange
- 6849 Walton Grange
- 6850 Cleeve Grange
- 6852 Headbourne Grange
- 6856 Stowe Grange
- 6864 Dymock Grange
- 6865 Hopton Grange
- 6870 Bodicote Grange
- 6874 Haughton Grange
- 6876 Kingsland Grange
- 6878 Longford Grange

Exclusive 225 Boiler Club – Donate £2,250 (or More)

Benefits – as Premier Club above plus personal invitation to Exclusive Boiler Club Luncheon Celebration event

FUTURE FUNDRAISING

The past appeals Speed Us to Success (for the Cylinders) and Steaming to Success (for the Boiler) and On the Shelf Parts Sponsorship, have been highly successful. I have been overwhelmed by the generosity of our members and the public alike. Being part of this unique 'club' of New Builds and being so determined and passionate about seeing a 'Grange' once again in steam, I join you all in supporting the final stages of the build.

So, looking to the future, and yes the end is in sight – but only with some concerted support – we still require much needed funds to complete the chassis, the boiler and all the cab fittings, and although it is intended to borrow a tender initially, we will be looking in the very near future to commence the construction of a tender tank to finish the job once and for all. To continue the success story we will be looking at further fundraising, new initiatives, new appeals, to support these FINAL STEPS in constructing the 81st 'Grange'.

Lynn Moore

EXCLUSIVE 'O' GAUGE WAGON

We have commissioned an exclusive run of just 43 'O' gauge five plank wagons from Dapol, featuring the livery of local coal merchant E.E. Davies & Co. of Corwen. Several were sold at Warley so there are now less than 30 of these left. All profits go towards No. 6880.

Price: £45.00 each including p&p. Order by post from Lynn, enclosing your cheque payable to '6880 Betton Grange Society' and send to Lynn Moore, 6880 Betton Grange Society, 224 Staining Road, Blackpool FY3 0DL. Don't forget to include your name and address for return of model!

